



## Easy Chess Puzzle # 0132

By

G Bud Games  
<https://gbud.in>

February 9, 2022

## Contents

<b>Easy Chess puzzle # 0132 - What is the better move than losing your rook</b>	<b>3</b>
Easy chess puzzle 0132 . . . . .	3
Solution to easy chess puzzle 0132 . . . . .	4
Solution 1 . . . . .	4
Right moves for the solution to the easy chess puzzle 0132	6
Explanation for the moves . . . . .	6
Categories of easy chess puzzle 0132 . . . . .	6
easy chess puzzle 0132 chart . . . . .	7
How to view the solution to easy chess puzzle 0132 . . . . .	9
How to get help for moves in the easy chess puzzle 0132 . . . .	10
Play chess for free . . . . .	11

## List of Figures

1	Solve this easy chess puzzle 0132. What is the better move than losing your rook @ <a href="https://gbud.in/gbpfn1">https://gbud.in/gbpfn1</a> . . . . .	3	
2	Solve this chess puzzle online with solution @ <a href="https://gbud.in/gbpfn1">https://gbud.in/gbpfn1</a> . . . . .	3	
3	Initial board position of easy chess puzzle 0132 . . . . .	4	
4	b4 . . . . .	5	
5	Bc4# . . . . .	5	
6	easy chess puzzle 132 chart 1 . . . . .	7	
7	easy chess puzzle 132 chart 2 . . . . .	8	
8	easy chess puzzle 132 chart 3 . . . . .	8	
9	easy chess puzzle 132 chart 4 . . . . .	9	
10	Click the solution button to view solutions @ <a href="https://gbud.in/gbpfn1">https://gbud.in/gbpfn1</a> . . . . .	9	
11	Click the help button to get help on next move @ <a href="https://gbud.in/gbpfn1">https://gbud.in/gbpfn1</a> . . . . .	10	
12	Solve more easy puzzles @ <a href="https://gbud.in/chsezp">https://gbud.in/chsezp</a> . . . . .	10	
13	Solve other puzzles @ <a href="https://gbud.in/chsgpp">https://gbud.in/chsgpp</a> . . . . .	10	
14	Play chess online for free. Solve puzzles and play with friends	11	
15	Solve this puzzle online by scanning this QR code or go to the link below . . . . .	12	

## Easy Chess puzzle # 0132 - What is the better move than losing your rook

Solve this easy chess puzzle and improve your chess games through improvement of your chess strategies and chess tactics.

Puzzle No : 0132

Difficulty level : Easy

Description : What is the better move than losing your rook

Next Move : White

Player level : Beginner

Short URL for puzzle : <https://gbud.in/gbpfnp1>

### Easy chess puzzle 0132

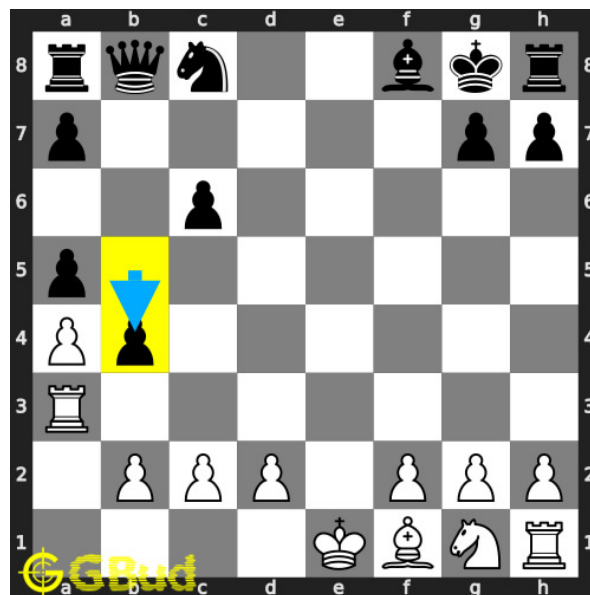


Figure 1: Solve this easy chess puzzle 0132. What is the better move than losing your rook @ <https://gbud.in/gbpfnp1>



Figure 2: Solve this chess puzzle online with solution @ <https://gbud.in/gbpfnp1>

Dont forget to check out [chess puzzles](#), [easy chess puzzles](#), [medium chess puzzles](#), [hard chess puzzles](#) and [chess puzzles collections](#) .

## Solution to easy chess puzzle 0132

At this puzzle, next [move](#) is by [White](#). The objective of the puzzle is to what is the better move than losing your rook.

See the interactive solution at the [puzzle page](#)

### Solution 1

**Initial board position** This is the initial board position of easy chess puzzle 0132.

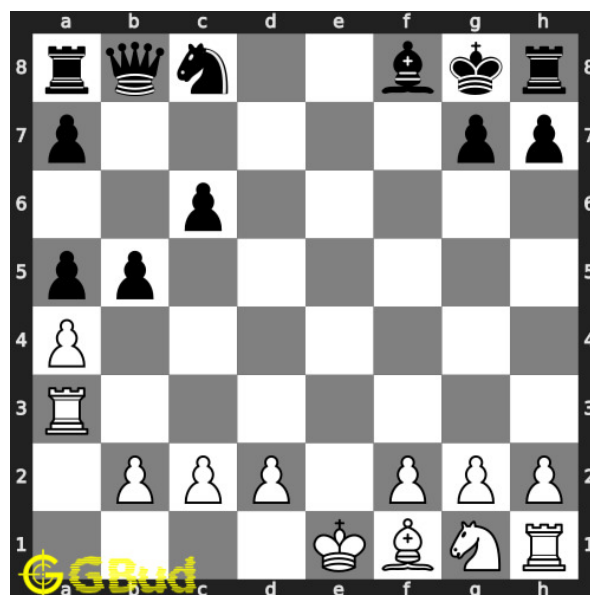


Figure 3: Initial board position of easy chess puzzle 0132

**Move 1** Move by black

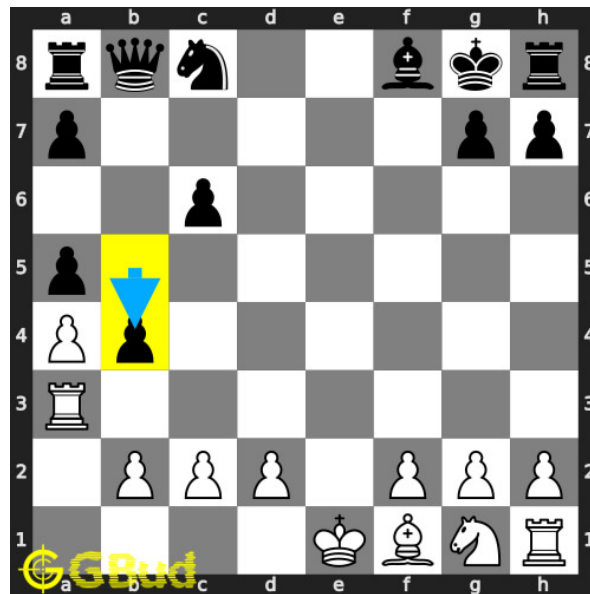


Figure 4: b4

opponent's **queen** supported **pawn** threatens your **rook**. with this **move**, **c4** is left unguarded.

**Move 2** Move by white

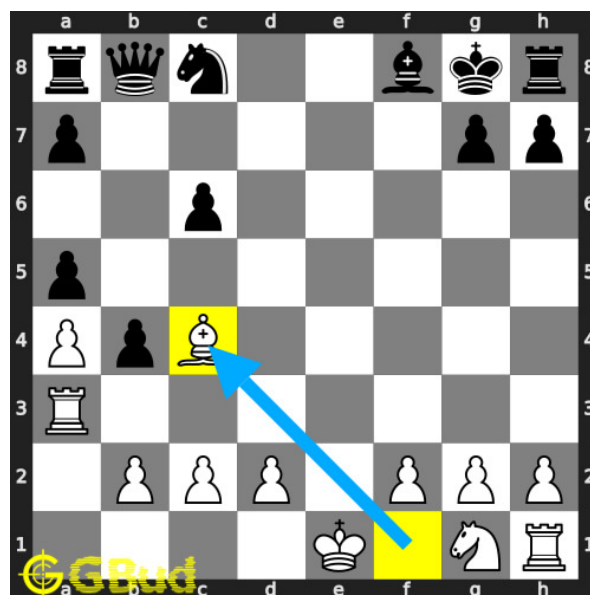


Figure 5: Bc4#

since the support to **c4** is lost, your **bishop** moves to **c4** and **checkmate**. this is better than losing the **rook**.

## Right moves for the solution to the easy chess puzzle 0132

Based on the objective of the puzzle, you have to make the right moves. Following are the right moves

1. Bc4#

## Explanation for the moves

1. b4 - Opponent's queen supported pawn threatens your rook. With this move, c4 is left unguarded.
2. Bc4# - Since the support to c4 is lost, Your bishop moves to c4 and checkmate. This is better than losing the rook.
3. For right move - You have moved bishop correctly to have a checkmate. It is a good strategy not to mind the attack on the rook.
4. For wrong move - You failed to realise the option to checkmate. Try again

## Categories of easy chess puzzle 0132

This easy chess puzzle falls in these categories.

1. [Easy chess puzzles](#)
2. [Sacrifice puzzles in chess](#)
3. [Mate in 1 puzzles in chess](#)
4. [Endgame puzzles in chess](#)
5. [Strategy puzzles in chess](#)
6. [Bishop puzzles in chess](#)

## easy chess puzzle 0132 chart



Figure 6: easy chess puzzle 132 chart 1



Figure 7: easy chess puzzle 132 chart 2



Figure 8: easy chess puzzle 132 chart 3





Figure 9: easy chess puzzle 132 chart 4

## How to view the solution to easy chess puzzle 0132

To view the [solution to this puzzle](https://gbud.in/blog/game/chess/easy-chess-puzzles/easy-chess-puzzle-0132.html), follow the steps given below

1. Go to the [puzzle page](https://gbud.in/blog/game/chess/easy-chess-puzzles/easy-chess-puzzle-0132.html)
2. Click the solution button (Key as shown [below](#)) to view the solution



Figure 10: Click the solution button to view solutions @ <https://gbud.in/gbpfnp1>

## How to get help for moves in the easy chess puzzle 0132

To get help or the possible next moves in the puzzle, , follow the steps given below

1. Go to the [puzzle page](#)
2. Click the help button (exclamation mark as shown [below](#)) to get help or suggestion on next possible [move](#)



Figure 11: Click the help button to get help on next move @ <https://gbud.in/gbpfnpl>



Figure 12: Solve more easy puzzles @ <https://gbud.in/chsezpz>



Figure 13: Solve other puzzles @ <https://gbud.in/chsgppz>

## Play chess for free

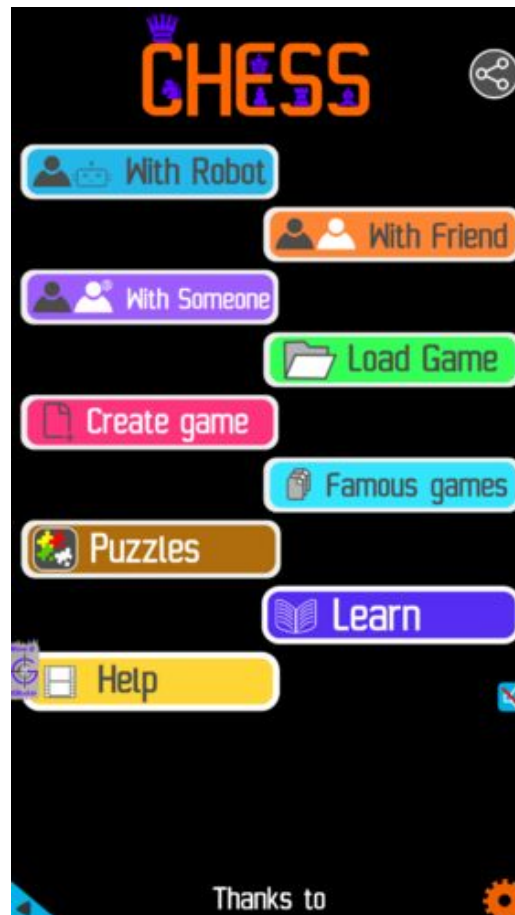


Figure 14: Play chess online for free. Solve puzzles and play with friends

Play chess for free at <https://gbud.in/chs>

We present you a platform to play chess online with friends for free. No need to install any app. You can play chess for free without registration or login.

Simple. You can do several chess related activities.

1. [solve chess puzzles](#)
2. [learn about chess](#)
3. [play chess with computer](#)
4. [play chess with friend](#)
5. [create your own chess games](#)

6. [fen viewer](#)
7. [fen editor](#)
8. [fen generator](#)
9. [pgn viewer](#)
10. [chess board editor](#)
11. [view famous chess games.](#)



Figure 15: Solve this puzzle online by scanning this QR code or go to the link below

<https://gbud.in/gbpfnp1>

Read the latest article on Easy Chess puzzle # 0132 - What is the better move than losing your rook by scanning this QR code or click the link

Previous article : « [Easy Chess puzzle # 0131 - What is the best move](#)

Next article : [Easy chess puzzles](#) »

[Back to top](#)

[Contact Us](#)